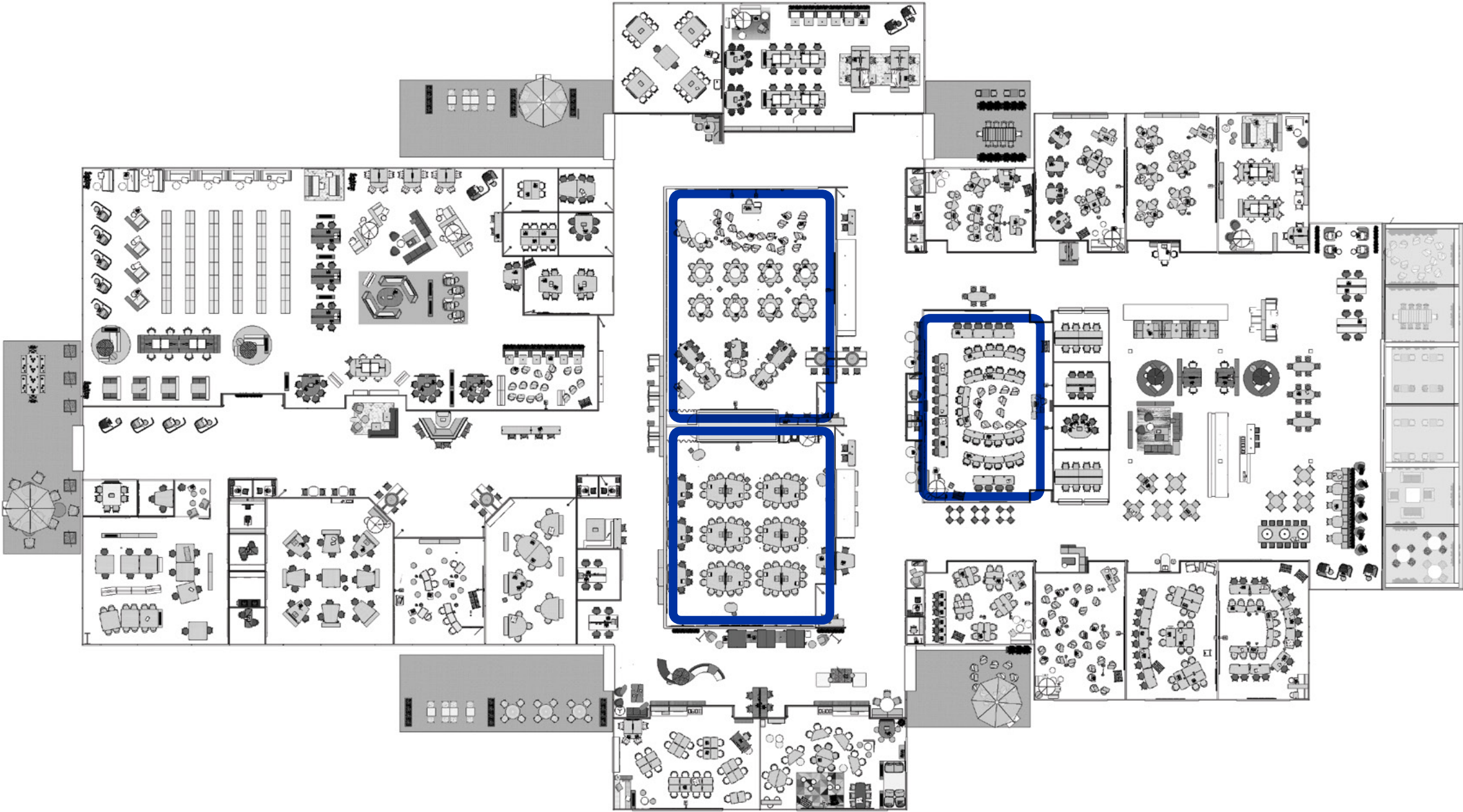
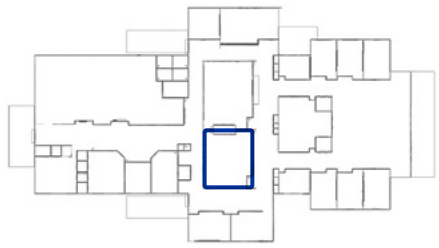


Large Active Learning Classrooms

Large classrooms are standard settings for efficient learning, especially at colleges and universities. In support of a more active approach, today's large classrooms are being reimagined to support technology, multiple modes of learning and healthy movement during class sessions.





Large Active Learning Classrooms Enabled



Distance easily provokes distraction and disengagement. Here, instructors can move throughout the room and address the class from multiple “fronts of the room.” As a result, every student’s seat is a good seat, with clear sight lines to the instructor, content and each other.



Technology is optimized for groups of six, providing students with a small-classroom sense of immediacy and community.

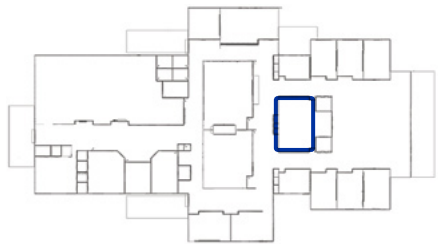


An arrival zone outside the classroom offers students and faculty a place to engage before or after class sessions.

understanding blended learning

designing for blended learning

applications



Large Active Learning Classrooms
Multipurpose Room



Flexible furniture ensures an active setting for 60 students. Near the entrance to the Student Commons, it can also be used off-hours for meetings and events.



A tiered layout positions stool-height seating in the back and desk-height in front, so everyone can stay visually connected—without the drawbacks of an architecturally tiered floor.



An operable wall easily divides the classroom in half, increasing its versatility.