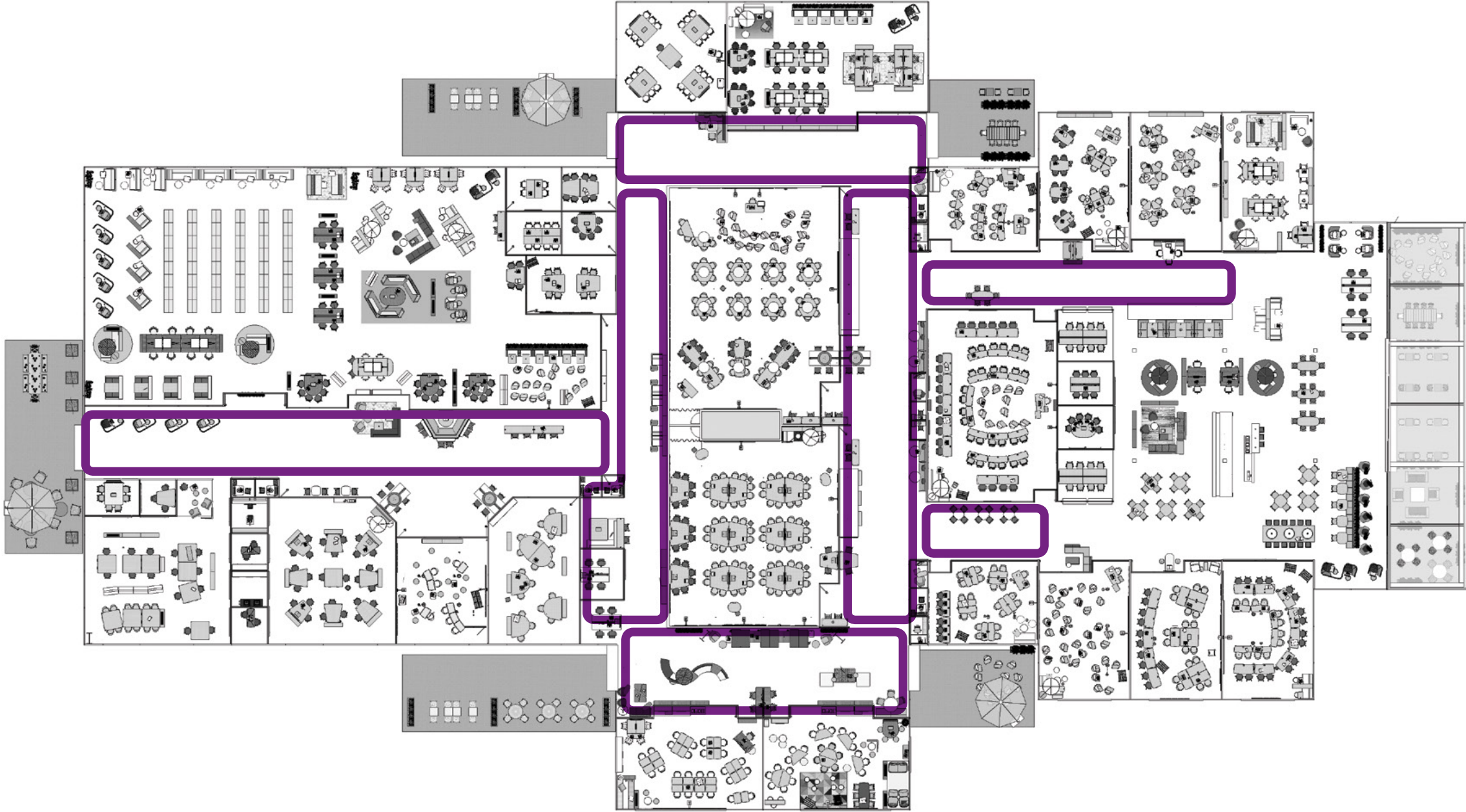
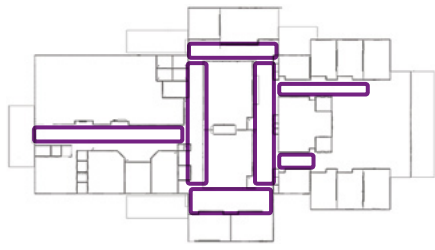


# In-Between Space

More than just transition spaces, lounges, hallways and other ancillary areas can be informal learning spaces for individuals and groups, giving students and teachers more choices and optimizing real estate.





## In-Between Space Corridor



A wide corridor is a gathering place for before and after class, encouraging students and teachers to extend discussions and learning. It can also be used for breakouts during class sessions.



Alternating enclosed and shielded settings provide multipurpose settings for students and faculty.



Booths and lounge seating offer alternative settings for studying or socializing.



Small focus rooms and phone booths are mixed into the in-between corridor spaces to provide private spaces.